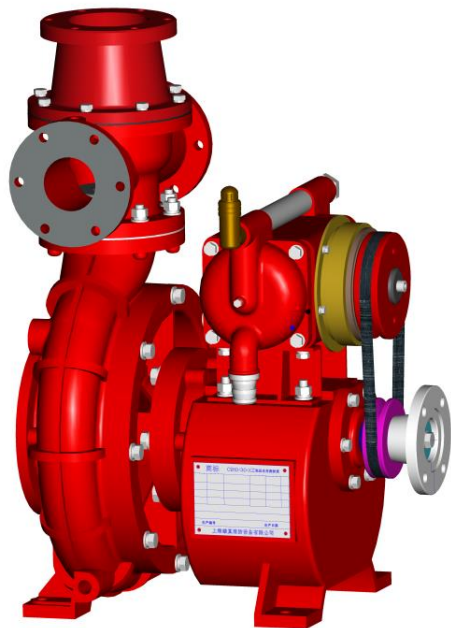




Low pressure fire pump:

Owner Manual

CB10/60-XZ



1、Maximum vacuum rate for fire pump:

Chart 1

Model	Parameter	Inlet (mm)	Outlet (mm)		Maximum vacuum (KPa)	Vacuum rate within 1 min (KPa)	7m suction time (S)
			Low pressure	Medium pressure			
Low pressure Fire Pump	CB10/20-XZ	φ 100	φ 65		≥85	<2.6	25
	CB10/30-XZ	φ 100	φ 80		≥85	<2.6	25
	CB10/40-XZ	φ 125	φ 80		≥85	<2.6	25
	CB10/60-XZ	φ 150	φ 100		≥85	<2.6	43.6
	CB10/80-XZ	φ 150	φ 100		≥85	<2.6	45

2、 Main parameter for fire pump

Chart 2

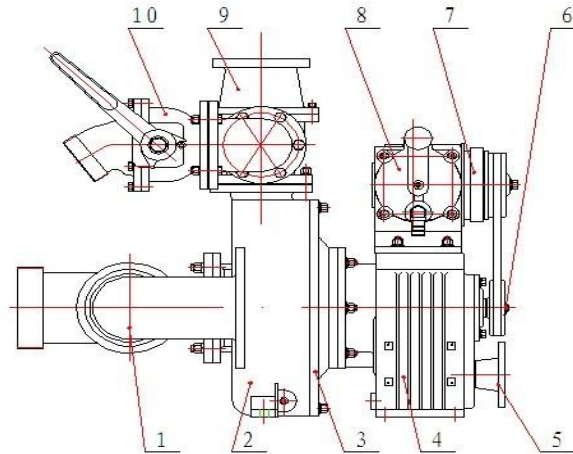
Name	Model	Work	Flow rate (L/S)	Outlet pressure (Mpa)	Rated speed (r/min)	Power (KW)	Suction depth (m)
Low pressure fire pump	CB10/20-XZ	1	20	1.00	3070 ± 50	34.29	3
		2	14	1.30	3380 ± 50	35.36	3
		3	10	1.00	3115 ± 50	27.42	7
Low pressure fire pump	CB10/30-XZ	1	30	1.00	3010 ± 50	50.00	3
		2	21	1.30	3340 ± 50	55.20	3
		3	15	1.00	3000 ± 50	38.60	7

Low pressure fire pump	CB10/40-XZ	1	40	1.00	3080 ± 50	62.92	3
		2	28	1.30	3360 ± 50	63.92	3
		3	20	1.00	2990 ± 50	41.95	7
Low pressure fire pump	CB10/60-XZ (1:1.346)	1	60	1.00	3200 ± 50	97.72	3
		2	42	1.30	3475 ± 50	105.76	3
		3	30	1.00	3130 ± 50	72.75	7
Low pressure fire pump	CB10/80-XZ (1:1.44)	1	80	1.00	3400 ± 50	137.60	3
		2	56	1.30	3500 ± 50	127.11	3
		3	40	1.00	3130 ± 50	83.75	7

3、 Outside drawing for fire pump

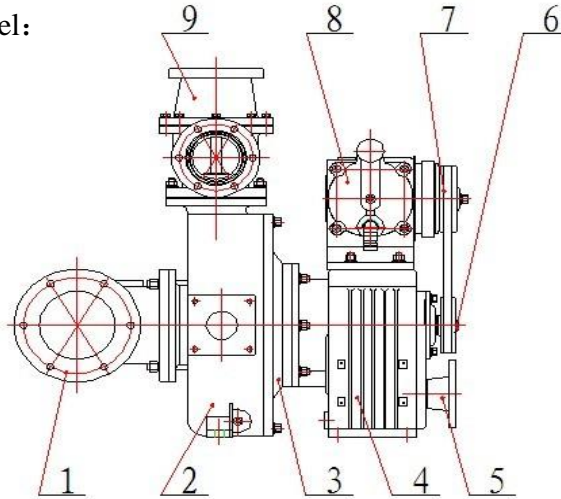
Picture 1 Low pressure fire pump outside drawing

Rear Install Model:



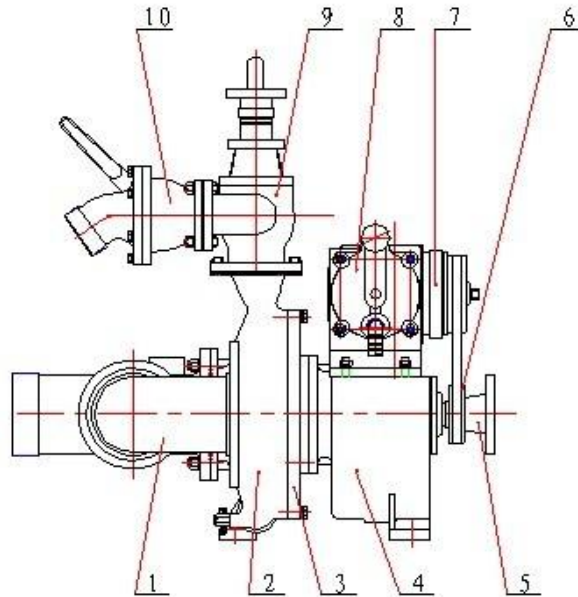
1 Inlet three-way Valve 2 Shell 3 Rear cover 4 Gearbox 5 Shaft coupling flange 6 belt wheel 7 Electromagnetic clutch 8 Piston primer pump 9 Back-pressure valve 10 Outlet ball valve

Middle Install Model:



1 Inlet three-way Valve 2 Shell 3 Rear cover 4 Gearbox 5 Shaft coupling flange 6 belt wheel 7 Electromagnetic clutch 8 Piston primer pump 9 Back-pressure valve

Rear Install Model:



- 1 Inlet three-way Valve 2 Shell 3 Rear cover 4 Gearbox 5 Shaft coupling flange 6 belt wheel 7 Electromagnetic clutch 8 Piston primer pump 9 Back-pressure valve 10 Outlet ball valve

4、Component for fire pump

Chart 1

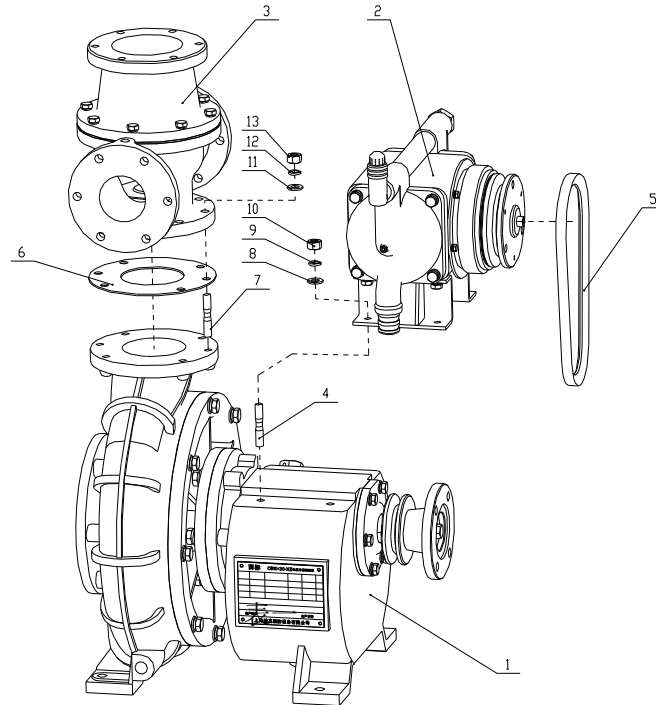


Chart One

Items	Part Number	Name	Quantity	Remark
1	GB276-82	Pump Assembly	1	Chart Two
2	HSB-000	Piston Pump Assembly	1	Chart Four
3	ZHF80-000	DN65 Back-Pressure Valve	1	Chart Six
4	GB900-88	Stud M10×40	4	
5	GB/T11544-1997	A-type 620 Trangle Belt	1	
6	CB10/30-000-001	Seal	1	
7	GB900-88	Stud M10×40	6	
8	GB95-76	Flat Gasket 10	4	
9	GB93-87	Spring Gasket 10	4	
10	GB/T6170-2000	Hexagon Nut M10	4	
11	GB95-76	Flat Gasket 10	6	
12	GB93-87	Spring Gasket 10	6	
13	GB/T6170-2000	Hexagon Nut M10	6	

Chart 2

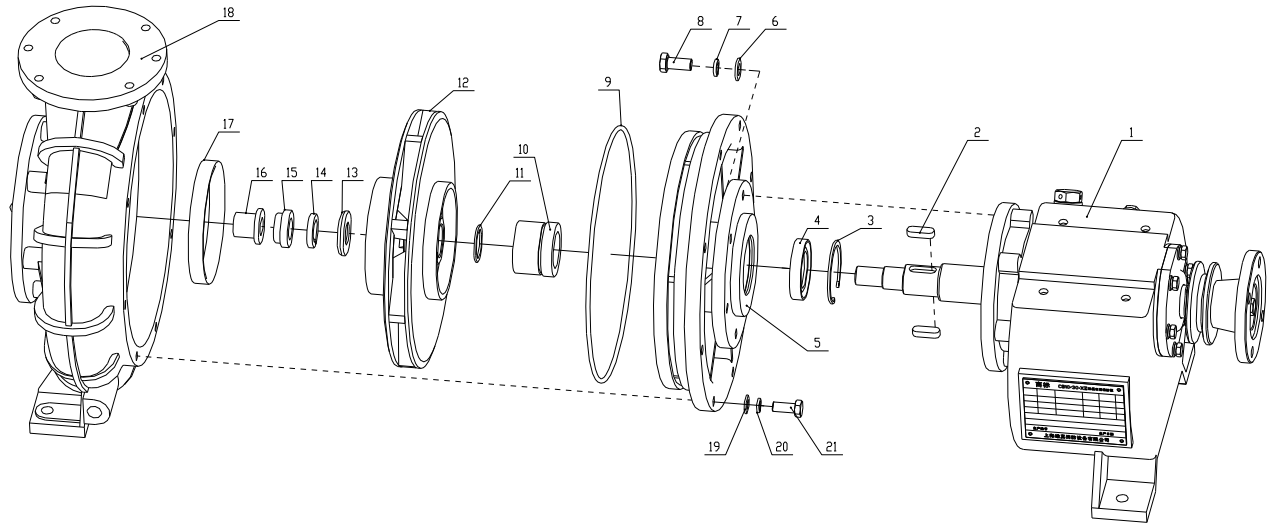


Chart Two

Items	Part Number	Name	Quantity	Remark
1		Bearing Box Assembly	1	Chart Three
2	GB1096-79	Flat Key	2	
3	GB893.1-86	Circlip for Hole 65	1	
4	HG4-692-67	Oil Seal PG40×65×12	1	
5	CB10/20-000-008	Rear Cover	1	
6	GB95-76	Flat Gasket 10	6	
7	GB93-87	Spring Gasket 10	6	
8	GB5781-86	Bolt M10×25	6	
9	GB3452.1-82	O-shape Seal ϕ 265×7	1	
10	126-HJ97GN/40	Mechanical Seal	1	
11	CB10/30-000-007	Gasket	1	
12	CB10/30-000-007	30 Low-pressure Impeller	1	
13	CB10/20-000-010	Lock Gasket	1	
14	GB93-87	Spring Gasket 24	2	

15	CB10/20-000-007	Lock Nut	1	
16	CB10/30-000-006	The Positioning Copper Sheath	1	
17	CB10/30-000-004	Copper Sheath	1	
18	CB10/30-000-002	30 Low-pressure Shell	1	
19	GB95-76	Flat Gasket 10	8	
20	GB93-87	Spring Gasket 10	8	
21	GB5781-86	Bolt M10×25	8	

Chart 3

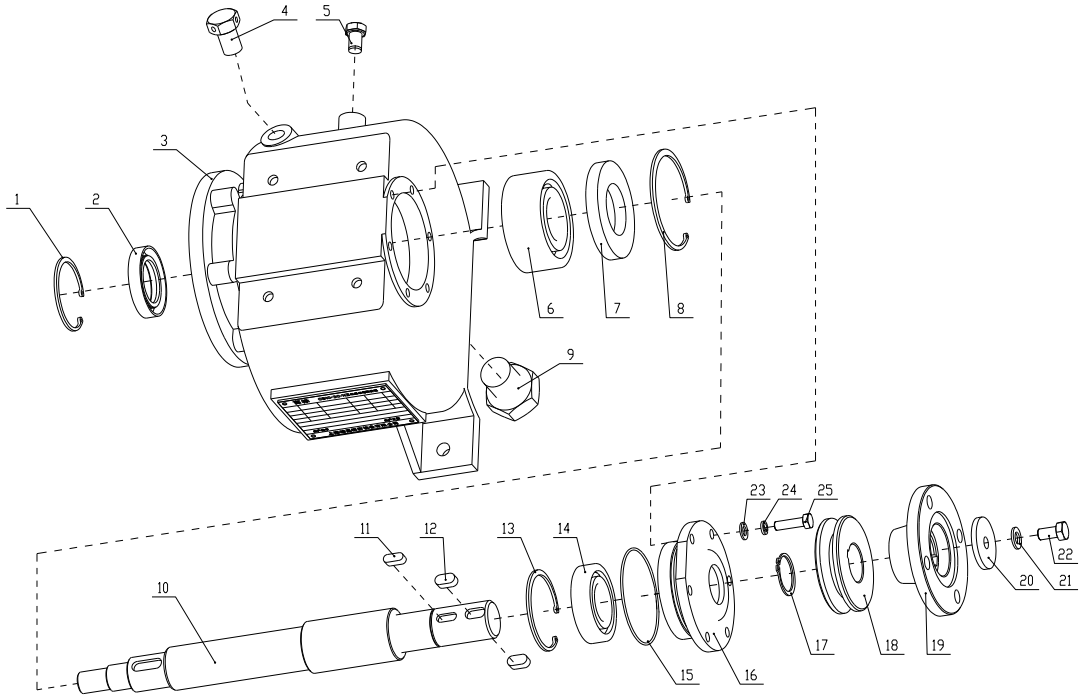


Chart Three

Items	Part Number	Name	Quantity	Remark
1	GB893.1-86	Circlip for Hole 65	1	
2	HG4-692-67	Oil Seal PG40×65×12	1	
3	CB10/20-000-009	Bearing Box	1	
4	CB10/20-000-016	Bolt M18×1.5	1	加油、透气
5	GB5781-86	Bolt M10×35	1	油位线
6	GB296-84	Bearing 3056308E(40×90×36.5)	1	
7	HG4-692-67	Oil Seal PG48×90×12	1	
8	GB893.1-86	Circlip for Hole 90	1	
9	CB10/60-C • 007	Coupling Flange Gasket	1	
10	CB10/30-000-005	Pump Spindle	1	
11	GB1096-79	Flat Key 8×20	1	
12	GB1096-79	Flat Key 10×20	2	

13	GB893.1-86	Circlip for Hole 72	1	
14	GB276-94	6207E(35×72×17)	1	
15	GB3452.1-82	O-shape Seal $\phi 87 \times 1.8$	1	
16	CB10/20-000-012	Bearing Box Rear Cover	1	
17	GB894.1-86	Circlip for Hole 35	1	
18	CB10/20-000-013	Belt Wheel	1	
19	CB10/20-000-014	Coupling Flange Gasket	1	
20	CB10/20-000-015	Gasket	1	
21	GB93-87	Spring Gasket 10	6	
22	GB5781	Bolt M10×20	6	
23	GB95-76	Flat Gasket 8	6	
24	GB93-87	Spring Gasket 8	6	
25	GB5781-86	Bolt M8×25	6	

Chart 4

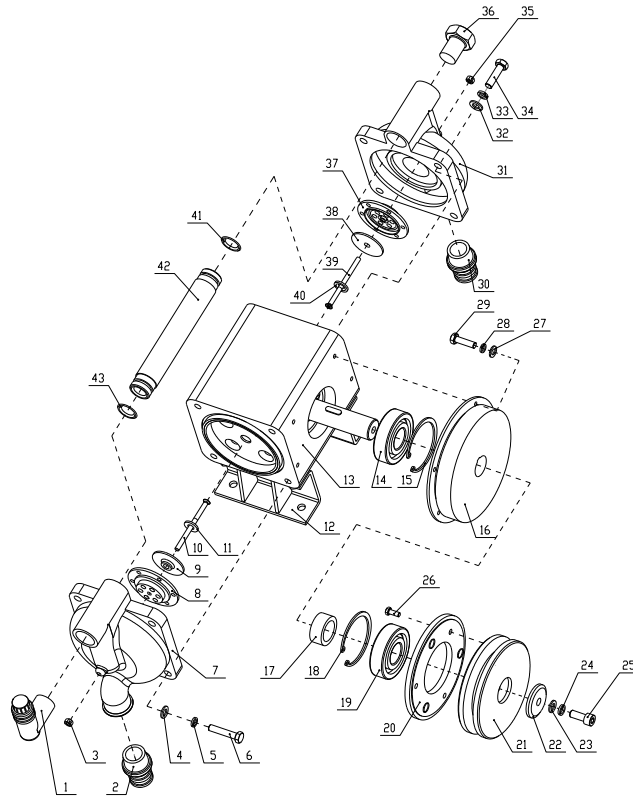


Chart Four

Items	Part Number	Name	Quantity	Remark
		Diversion Elbow Assembly	1	
2		Exhaust Connector	1	
3	GB6170-85	Nut	1	
4	GB95-76	Flat Gasket 8	4	
5	GB93-87	Spring Gasket 8	4	
6	GB5781-86	Bolt M8 × 30	4	
7	HSB-000-001	Piston Cover Head	1	
8	HSB-000-012	Copper Core	1	
9	HSB-000-003	Piston Suction Sealing Ring	1	
10	GB819-85	Bolt M5 × 70	1	
11	HSB-000-002	Piston Suction Gasket	1	
12	HSB-000-017	Bracket	2	

13		Piston Cylinder Assembly	1	Chart Five
14	GB276-85	Bearing E305	1	
15	GB839.1-86	Circlip for Hole 62	1	
16	DDL10-4	Electromagnetic Clutch	1	
17	HSB-000-013	Adjusting Gasket	1	
18	GB839.1-86	Circlip for Hole 62	1	
19	GB276-85	Bearing E305	1	
20		Electromagnetic Clutch Accessories	1	
21	HSB-000-015	Belt Wheel	1	
22	HSB-000-014	Belt Wheel Gasket	1	
23	GB95-76	Flat Gasket 8	1	
24	GB93-87	Spring Gasket 8	1	
25	GB/T70.2	Hexagon Socket Screws M8 × 20	1	
26	GB5781-86	Bolt M6 × 12	3	
27	GB95-76	Flat Gasket 5	4	

28	GB93-87	Spring Gasket 5	4	
29	GB5781-86	Bolt M5 × 25	4	
30		Exhaust Connector	1	
31	HSB-000-001	Piston Head Cover	1	
32	GB95-76	Flat Gasket 8	4	
33	GB93-87	Spring Gasket 8	4	
34	GB5781-86	Bolt M8 × 30	4	
35	GB6170-85	Nut	1	
36		ZG 3/4 Bulkhead	1	
37	HSB-000-012	Copper Core	1	
38	HSB-000-003	Piston Suction Sealing Ring	1	
39	GB819-85	Bolt M5 × 70	1	
40	HSB-000-002	Piston Suction Gasket	1	
41	GB3452.1-82	O-shape Seal ϕ 21 × 1.8	1	
42	HSB-000-016	Piston Intubation	1	
43	GB3452.1-82	O-shape Seal ϕ 21 × 1.8	1	

Shart 5

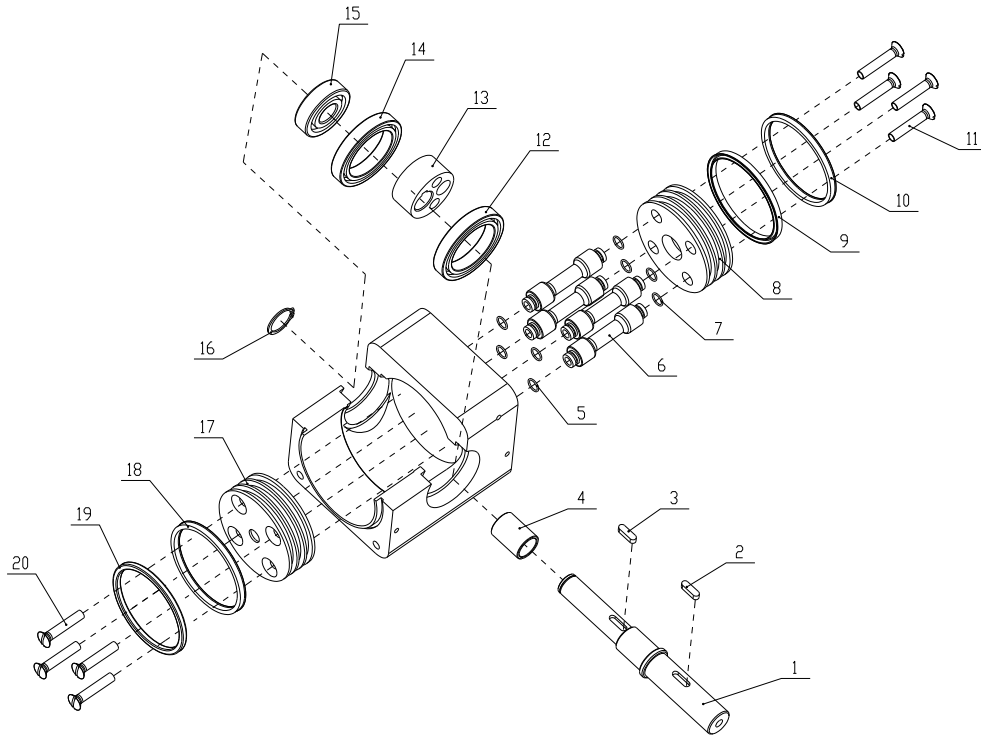


Chart Five

Items	Part Number	Name	Quantity	Remark
1	HSB-000-008	Piston Pump Shaft	1	
2	GB1096-79	Flat Key 6×20	1	
3	GB1096-79	Flat Key6×20	1	
4	HSB-000-008	Shaft Sleeve	1	
5	GB3452.1-82	O-shape Seal ϕ 10.44×1.8	4	
6	HSB-000-010	Upright	4	
7	GB3452.1-82	O-shape Seal ϕ 10.44×1.8	4	
8	HSB-000-005	Piston Coat	1	
9		Sealing Ring ϕ 80×90×6	1	
10		Sealing Ring ϕ 80×90×6	1	
11	GB/T70.3-2000	Hexagon Socket Screws M8×40	4	
12	GB/T276-94	Bearing 61910	1	
13	HSB-000-005	Eccentric Wheel	1	
14	GB/T276-94	Bearing 61910	1	

15	GB/T276-94	Bearing E304	1	
16	GB894.1-86	Circlip for Shaft 52	1	
17	HSB-000-005	Piston Coat	1	
18		Sealing Ring $\phi 80 \times 90 \times 6$	1	
19		Sealing Ring $\phi 80 \times 90 \times 6$	1	
20	GB/T70.3-2000	Hexagon Socket Screws M8 \times 40	4	

Chart 6

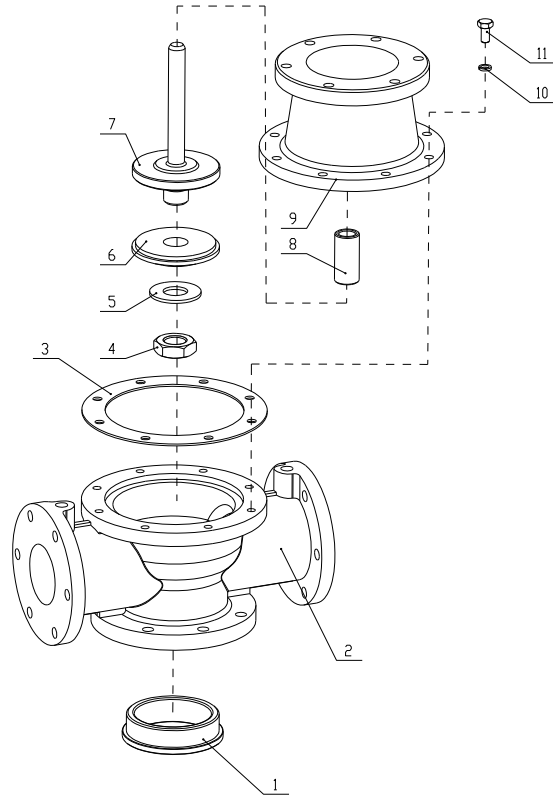
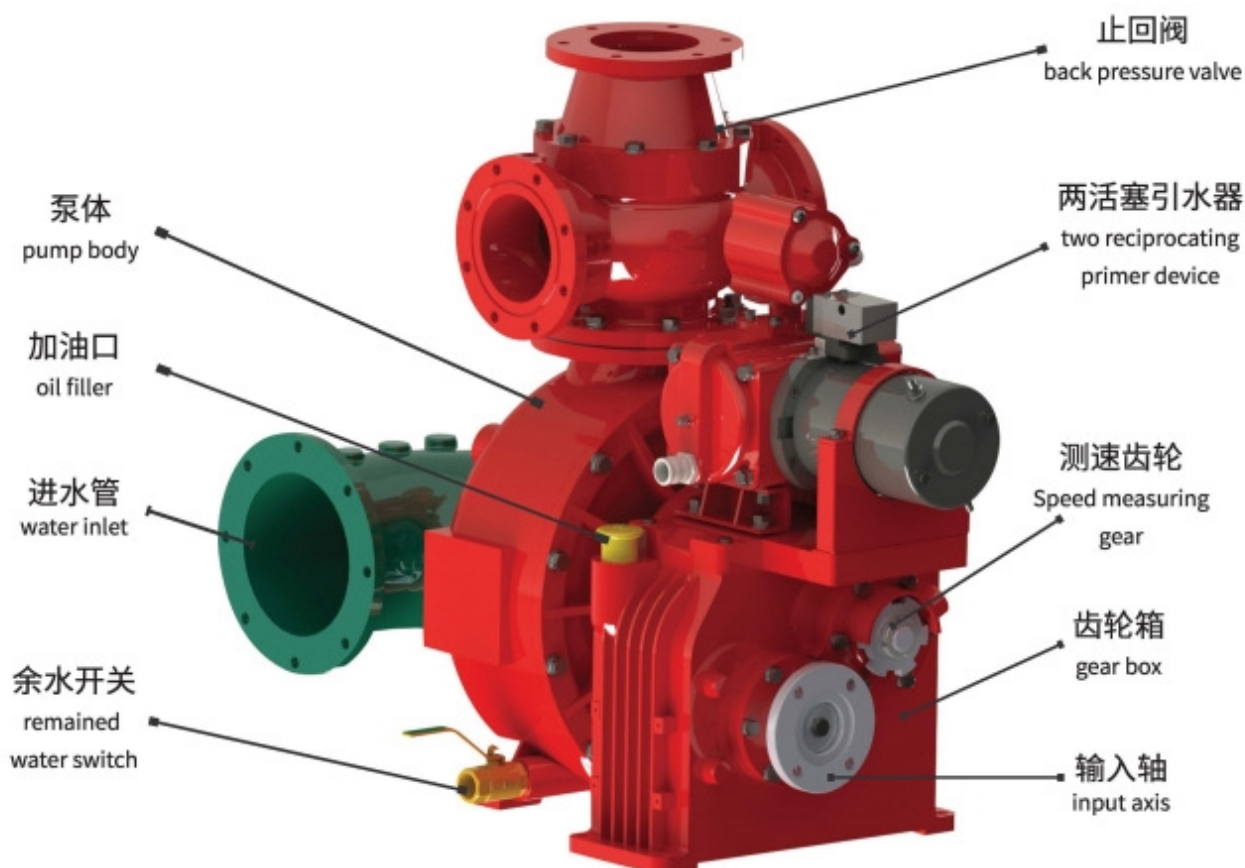


Chart Six

Items	Part Number	Name	Quantity	Remark
1	ZHF80-000-008	Valve Seat	1	
2	ZHF80-000-003	Middle Pipe	1	
3		Seal Gasket	1	
4	ZHF80-000-007	Helicoidal	1	
5	ZHF80-000-006	Gasket	1	
6	ZHF80-000-005	Valve Gasket	1	
7	ZHF80-000-004	Valve Joystick	1	
8	ZHF80-000-002	Copper Bush	1	
9	ZHF80-000-001	Bracket	1	
10	GB93-87	Spring Gasket 8	8	
11	GB5781-86	Bolt M8×12	8	

CB10/60-XZ (车用消防泵/Automotive fire pump)

产品介绍：CB10/60-XZ低压车用消防泵由雄真自主研发设计，采用单级导叶结构出水均衡、稳定、可靠。采用电动两活塞引水装置，引水时间短，操作方便。



水泵工况性能参数

型号规格 Specifications	工况 Working Condition	流量 (L/s) Flow	出口压力 (MPa) Exit Pressure	额定转速 (r/min) Rated Speed	轴功率 (kw) Shaft Power	吸深 (m) Suction Depth
CB10/60-XZ	1	60	1.0	3280±50	102	3
	2	42	1.3	3520±50	106	3
	3	30	1.0	3120±50	73	7

CB10/60-XZ工况性能曲线



上海雄真消防设备有限公司

低压车用消防泵检验结果汇总表

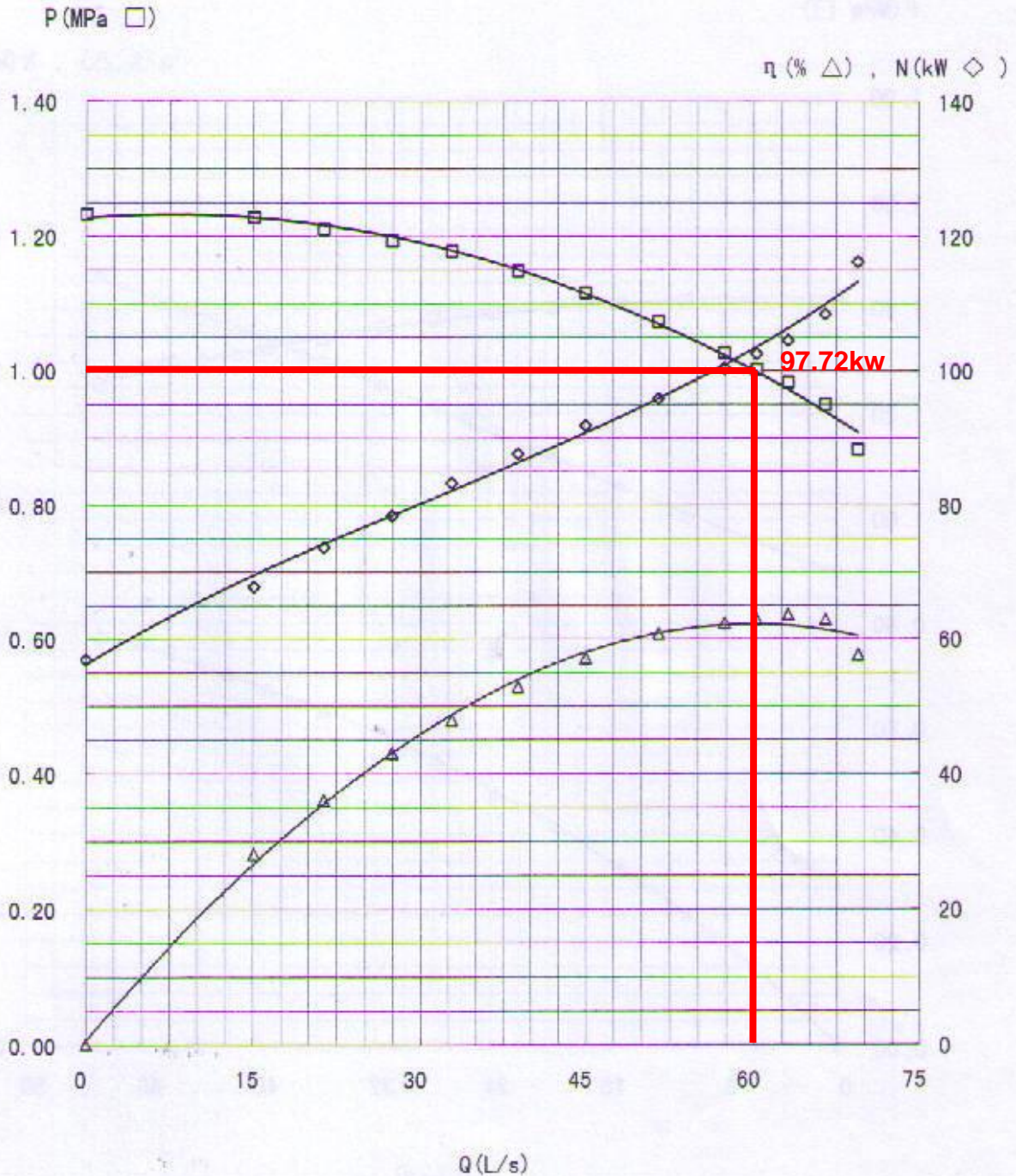
工况 1 性能曲线

生产单位：上海雄真消防设备有限公司

№ Zb201431011

产品型号：CB10/60-XZ

共 10 页 第 09 页



国家消防装备质量监督检验中心

低压车用消防泵检验结果汇总表

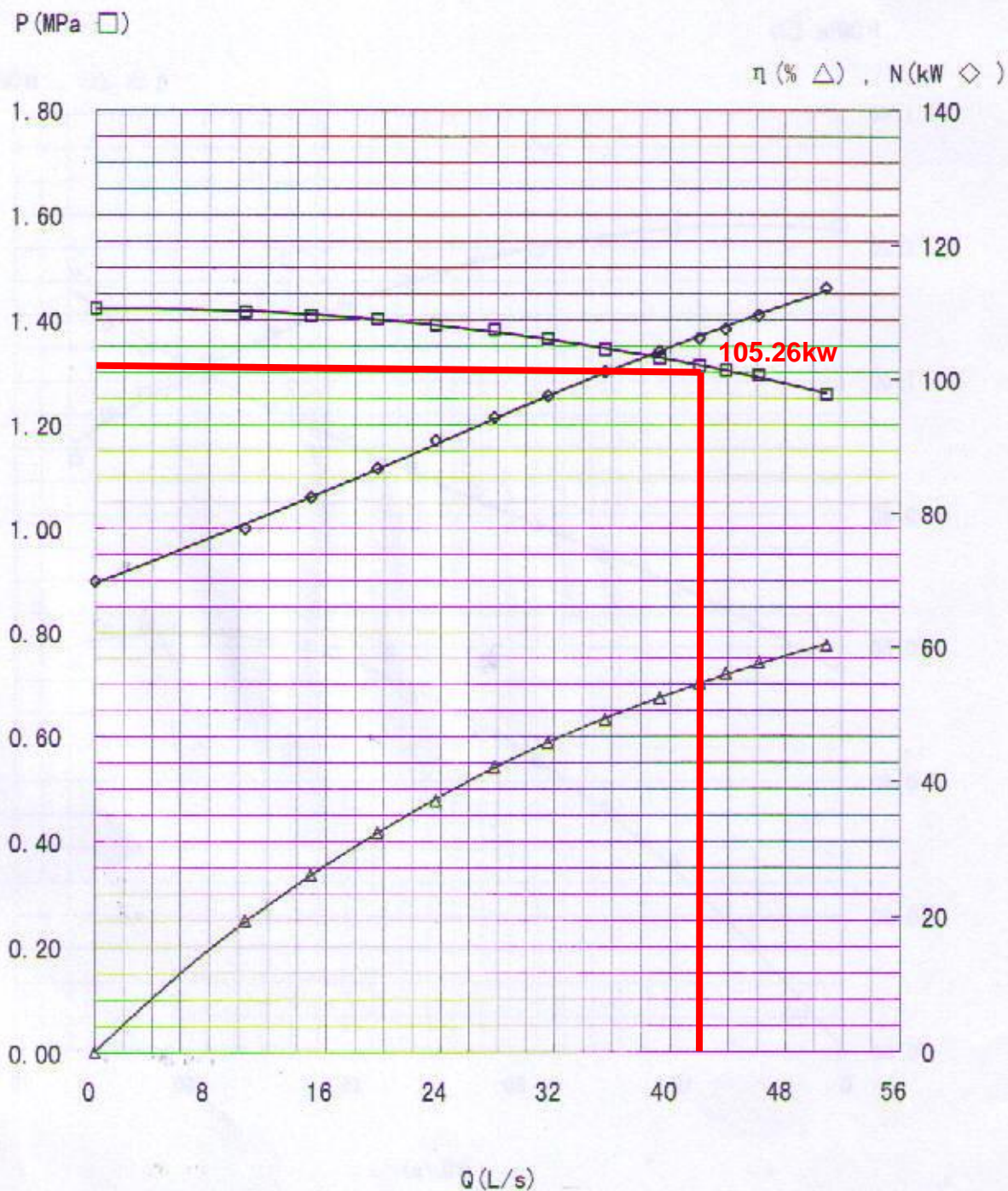
工况 2 性能曲线

生产单位：上海雄真消防设备有限公司

No Zb201431011

产品型号：CB10/60-XZ

共 10 页 第 10 页



国家消防装备质量监督检验中心